

Flasher System-Solar Power

The solar powered flasher system operates on 12 VDC, and is based on a typical pole mounted, wig-wag signal assembly designed for advanced warning. The flasher assembly shall have the following components and characteristics:

Signal Assembly

1. Anodized aluminum base and cover with an integrated wind collar (extended neck) that complies with standard plate 8122.
2. Anodized aluminum pole that is:
 - a. Schedule 80
 - b. 14 feet in length and 4.5" outside diameter
 - c. Threaded at one end to mate with aluminum base listed above
3. Two one-way, 12 inch amber LED polycarbonate signal assemblies that have black cut-away visors and background shields. The LED indications have a 10 year warranty.
4. The signals operate in a wig-wag fashion.
5. Meets AASHTO wind force ratings.

Solar Array

1. The self- contained solar assembly is mounted at the top of the pole using stainless steel hardware.
2. The single solar panel array is rated 50 watts or greater and produces a minimum of 2.78 amps charge current. The solar array module has a 10 year warranty.

Communications Cabinet

1. Aluminum construction
2. Hinged door with a keyed lock. Door hinges are mounted to allow the 13" x 13" door to swing open.
3. All pole mounting hardware is included.

Battery with Cabinet

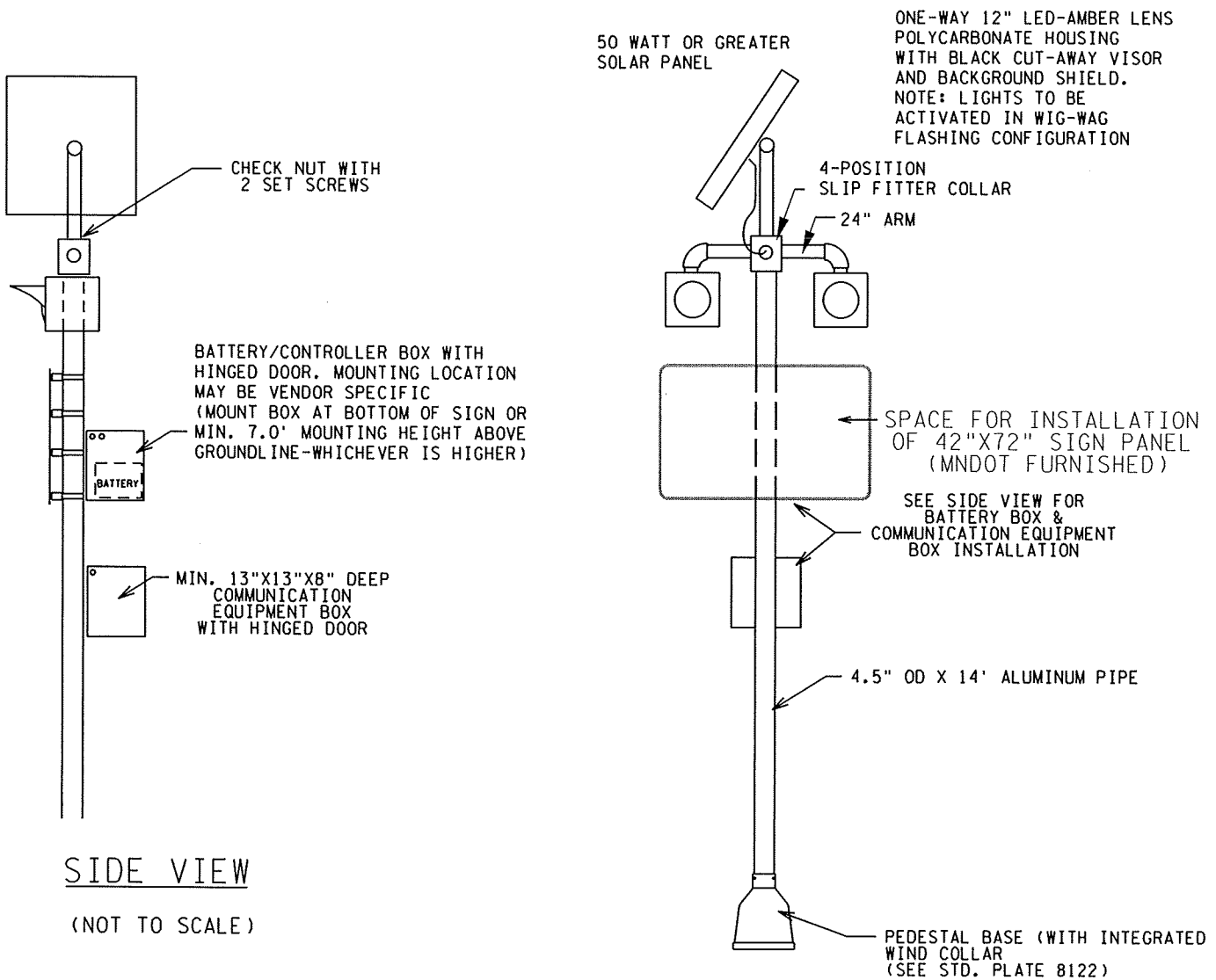
1. The GEL battery is rated at 100 Amp hours or greater, is designed for 5 years of operation and carries a 2 year full replacement warranty.
2. The battery is contained within an aluminum vented cabinet identical in construction to the communications cabinet.

Solar Charge Controller

The solar charger is a commercial-grade 12 VDC charge controller that is suitable for all LED lighting applications and has the following features:

1. Uses a 3-stage PWM-charging process for sealed batteries.
2. Low-voltage and high-voltage disconnect.
3. Flexible load timer functions.
4. Multi-LED system status display.
5. Waterproof sealed housing that meets IP68 rating.

FLASHER SIGNAL-SOLAR POWER



SIDE VIEW
(NOT TO SCALE)

FRONT VIEW
(NOT TO SCALE)

NOTES:

1. ALL METAL FITTINGS SHALL BE ANODIZED ALUMINUM.
2. USE ANTI-SEIZE COMPOUND ON ALL FITTINGS.

FLASHER SIGNAL-SOLAR POWER INCLUDES:

- . SOLAR PANEL/CHARGING ASSEMBLY
- . POLE
- . PEDESTAL BASE
- . BATTERY BOX & BATTERY
- . COMMUNICATIONS EQUIPMENT BOX
- . FLASHERS, FLASHER CONTROLLER, MOUNTING HARDWARE & WIRING

NOTE: THIS DRAWING IS FOR REFERENCE ONLY. CONTRACTOR MUST REFER TO PLANS AND SPECIFICATIONS FOR ADDITIONAL COMPONENTS NECESSARY TO COMPLETE THE INSTALLATION AND ASSEMBLY OF THE FLASHER SIGNAL-SOLAR POWER.